

1P

Arktite® Heavy Duty Circuit Breaking Receptacle Assemblies and Housings

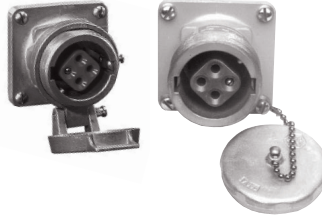
NEMA 4 Watertight

30 A, 600 VAC/250 VDC, 50† – 400 hertz

Ordering Information:



Receptacle Assembly



Receptacle



Mating Plug



Mating Connector

With ARE Back Boxes

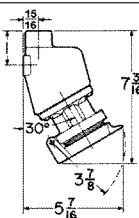
Receptacle Housings Only

Mating APJ Plugs†

Mating APR Connectors

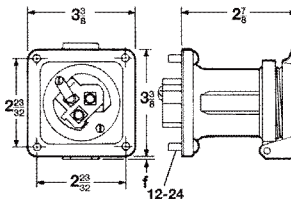
Description	Hub Size (In.)	Spring Door Cat. #	Spring Door Cat. #	Threaded Cap Only Cat. #	Cat. #	Cable Dia.	Cat. #	Cable Dia.
Style 1								
2-wire, 2-pole }	1/2	ARE3211	AR321	AR327	APJ3275	0.39 to 1.20	APR3255	0.39 to 1.20
3-wire, 3-pole }	3/4	ARE3312	AR331	AR337	APJ3375	0.39 to 1.20	APR3355	0.39 to 1.20
4-wire, 4-pole }	1	ARE3412	AR341	AR347	APJ3475	0.39 to 1.20	APR3455	0.87 to 1.20
5-wire, 5-pole }	1	ARE3513	AR351		APJ3573	.500 to .875	APR3553	.500 to .875
Style 2								
2-wire, 3-pole }	3/4	ARE3322	AR332	AR338	APJ3385	0.39 to 1.20	APR3365	0.39 to 1.20
3-wire, 4-pole }	1	ARE3422	AR342	AR348	APJ3485	0.39 to 1.20	APR3465	0.39 to 1.20
4-wire, 5-pole }	1	ARE3523	AR352		APJ3583	.500 to .875	APR3563	.500 to .875
					APJ3585	.875 to 1.375	APR3565	.875 to 1.375

Dimensions In Inches:

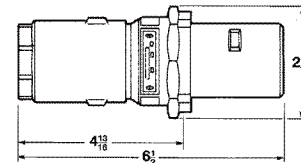


30A
2,3 and 4 POLE

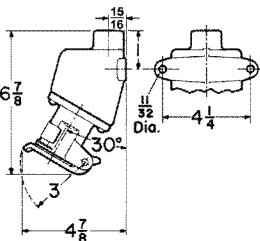
ARE Assembly



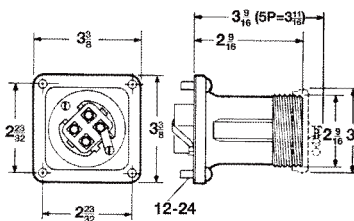
AR Receptacle - Spring Door



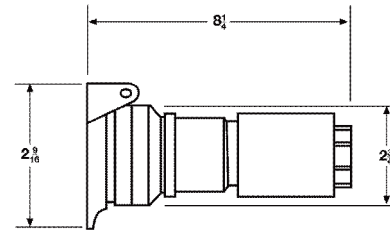
Plug



30A
5 POLE



AR Receptacle - Open and With Cap



Connector

†For use on systems less than 60 hertz the receptacles, plugs and connectors are for disconnect use only.

1P

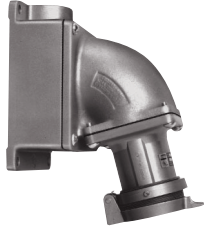
1P

Arktite® Heavy Duty Circuit Breaking Receptacle Assemblies and Housings

NEMA 4 Watertight

60 A, 600 VAC/250 VDC, 50† – 400 hertz

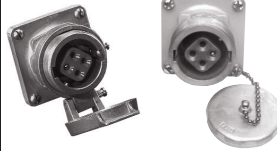
Ordering Information:



Receptacle Assembly



Receptacle



Receptacle Housing Only



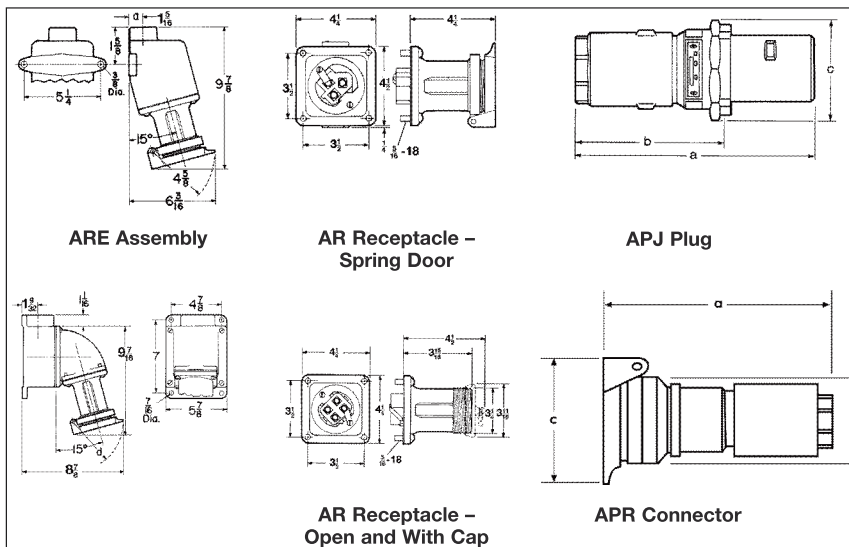
Mating Plug



Mating Connector

Description	With AJ Back Boxes and Angle Adapters			With ARE Back Boxes		Cable Dia.	Cat. #	Cat. #
	Hub Size (In.)	Spring Door Cat. #	Threaded Cap Only Cat. #	Spring Door Cat. #	Threaded Cap Only Cat. #			
Style 1								
2-wire, 2-pole }	1	AREA6213		ARE6213	AR621	0.50 to 1.45	APJ6275	APR6255
	1 1/4	AREA6214		ARE6214	AR627			
3-wire, 3-pole }	1	AREA6313		ARE6313	AR631	0.50 to 1.45	APJ6375	APR6355
	1 1/4	AREA6314		ARE6314	AR637			
4-wire, 4-pole }	1 1/4	AREA6414		ARE6414	AR641	0.50 to 1.45	APJ6475	APR6455
	1 1/2	AREA6415		ARE6415	AR647			
5-wire, 5-pole }	1 1/4		AREA6574 AREA6575			0.50 to 1.45	APJ6575	
	1 1/2				AR657			
Style 2								
2-wire, 3-pole }	1	AREA6323		ARE6323	AR632	0.50 to 1.45	APJ6385	APR6365
	1 1/4	AREA6324		ARE6324	AR638			
3-wire, 4-pole }	1 1/4	AREA6424		ARE6424	AR642	0.50 to 1.45	APJ6485	APR6465
	1 1/2	AREA6425		ARE6425	AR648			
4-wire, 5-pole }	1 1/4		AREA6584 AREA6585			0.75 to 1.45	APJ6585	APR6565 APR6567
	1 1/2				AR658			

Dimensions (In Inches):



Config.	Plug			Connector		
	a	b	c	a	b	c
2P or 3P	8 1/2	5 3/4	3 3/8	6 1/2	3 5/8	2 15/16
4P	8 1/2	5 13/16	3 3/4	8 1/4	3 3/8	2 15/16
5P	9	6 7/16	4 7/16	8 1/4	3 5/8	3 1/4

†For use on systems less than 60 hertz the receptacles, plugs and connectors are for disconnect use only.

Arktite® Heavy Duty Circuit Breaking Receptacle Assemblies and Housings

NEMA 4 Watertight

1P

60 A, 600 VAC/250 VDC, 50† – 400 hertz

Plug Closure Caps:

Applications:

CPK caps for Arktite plugs are used:

- Where portable equipment is on a standby basis and plugs are not in use
- To effectively protect insulation and contacts from excessive moisture, dirt, dust and corrosion
- With 30, 60, 100, 150 and 200 ampere plugs with fastening ring and standard 200 ampere plugs for the clamp door housing



Ordering Information:

Config.	Cat. #
2P & 3P	CPK32
4P	CPK34

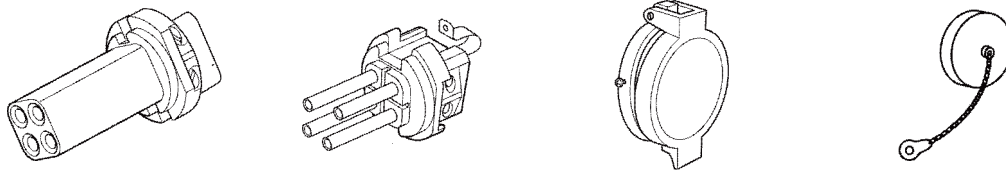
Standard Materials:

- Copper-free aluminum

Standard Finishes:

- Natural

Replacement Parts:



Config.	Receptacle Interior	Plug Interior	Spring Door	Screw Cap
2W 2P	ATP295	ATP290	QE51	QE32
2W 3P	ATP298	ATP293		
3W 3P	ATP296	ATP291		
3W 4P	ATP299	ATP294	QE52	QE34
4W 4P	ATP297	ATP292		
4W 5P	ATP385	ATP387	N/A	AR:11393B
5W 5P	ATP384	ATP386	N/A	

Replacement Pin & Sleeve Contacts:

Description	Recep	Plug
Available as a kit only. 5 phase contacts & 1 ground contact included.	AR60CONKIT	AP60CONKIT

†For use on systems less than 60 hertz the receptacles, plugs and connectors are for disconnect use only.

1P

1P

Arktite® Heavy Duty Circuit Breaking Receptacle Assemblies and Housings

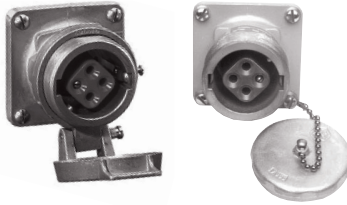
NEMA 4 Watertight

100 A, 600 VAC/250 VDC, 50† – 400 hertz
 150 A, 600 VAC/250 VDC, 50† – 400 hertz

Ordering Information:



Receptacle Assembly



Receptacle

Receptacle Housings Only



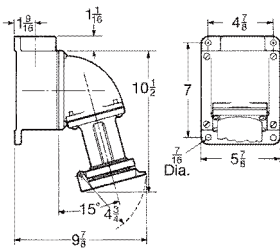
Mating Plug



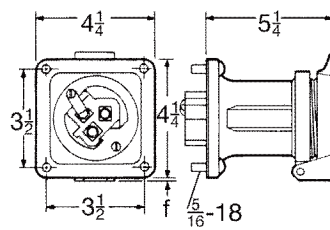
Mating Connector

Description	Hub Size (In.)	Spring Door Cat. #	Spring Door Cat. #	Threaded Cap Only Cat. #	Cable Dia.	Cat. #	Cat. #
100A - Style 1							
2-wire, } 2-pole }	1¼ 1½	AREA10214 AREA10215	AR1021	AR1027	0.875 to 1.70	APJ10277	APR10257
3-wire, } 3-pole }	1¼ 1½	AREA10314 AREA10315	AR1031	AR1037	0.875 to 1.70	APJ10377	APR10357
4-wire, } 4-pole }	1½ 2	AREA10415 AREA10416	AR1041	AR1047	0.875 to 1.70	APJ10477	APR10457
100 A - Style 2							
2-wire, } 3-pole }	1¼ 1½	AREA10324 AREA10325	AR1032	AR1038	0.875 to 1.70	APJ10387	APR10367
3-wire, } 4-pole }	1½ 2	AREA10425 AREA10426	AR1042	AR1048	0.875 to 1.70	APJ10487	APR10467
150 A - Style 2 *							
3-wire, } 4-pole }			AR1542	AR1548	0.875 to 1.70	APJ15487	

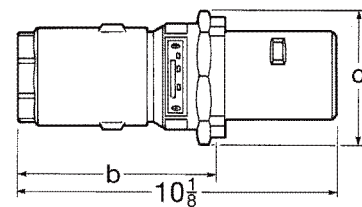
Dimensions (In Inches):



ARE Assembly



AR Receptacle - Spring Door



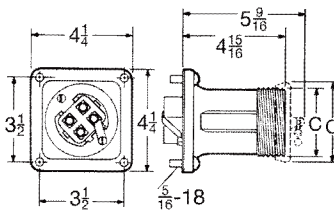
APJ Plug

No. Poles	f
2 or 3	9/32
4	13/32

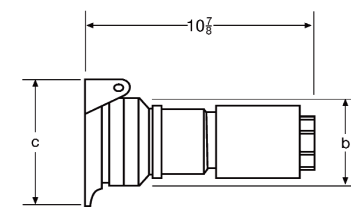
No. Poles	b	c
3	6 9/16	3 3/4
4	6 5/8	4 1/8

No. Poles	Housing	c
2 or 3	open	3 3/16
4	open	3 7/16
2 or 3	with cap	3 1 1/16
4	with cap	3 7/8

No. Poles	b	c
3	3 3/8	3 3/16
4	3 1/2	3 7/16



AR Receptacle - Open and With Cap



APR Connector

† For use on systems less than 60 hertz the receptacles, plugs and connectors are for disconnect use only.
 * For 150A - Consult factory for additional options and configurations. Consult factory for certifications information.